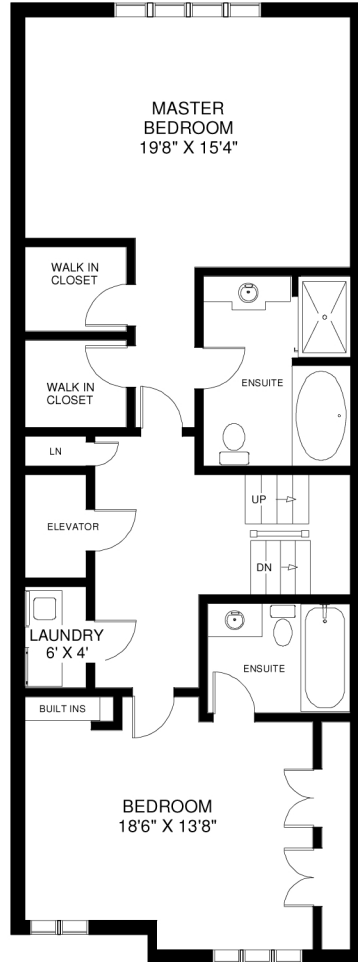
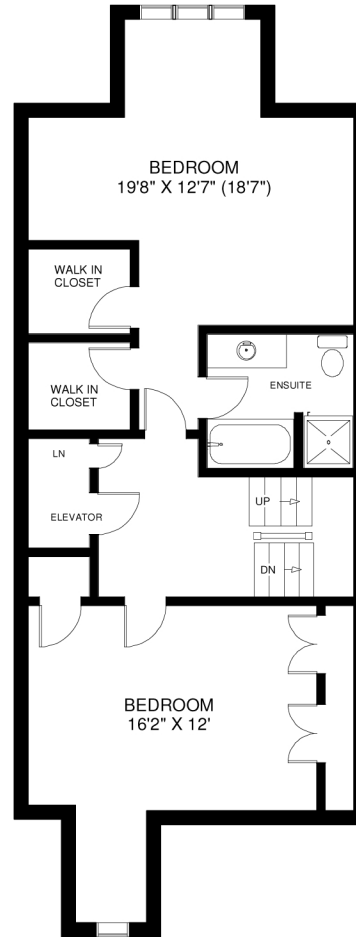


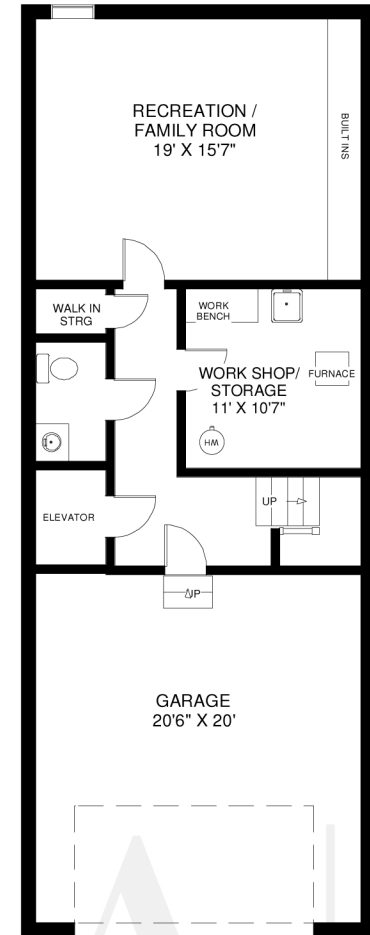
CEILING HT 9'
MAIN FLOOR
APPROXIMATELY 1,225 SQ FT



CEILING HT 8'
SECOND FLOOR
APPROXIMATELY 1,200 SQ FT



CEILING HT 8'
THIRD FLOOR
APPROXIMATELY 1,000 SQ FT



CEILING HT 9'
LOWER FLOOR
APPROXIMATELY 720 SQ FT

Note: Measurements & Calculations are approximate. Provided as a guideline only.

