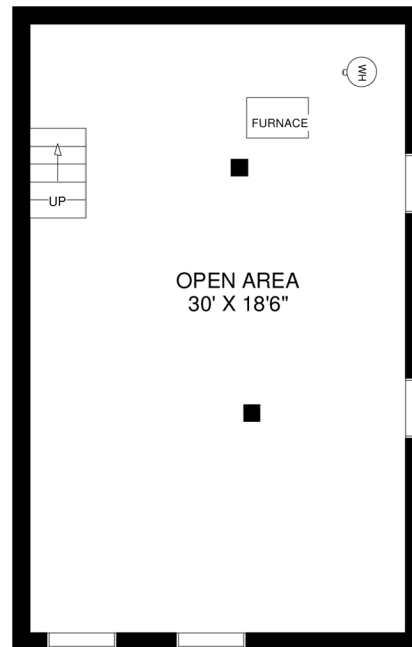
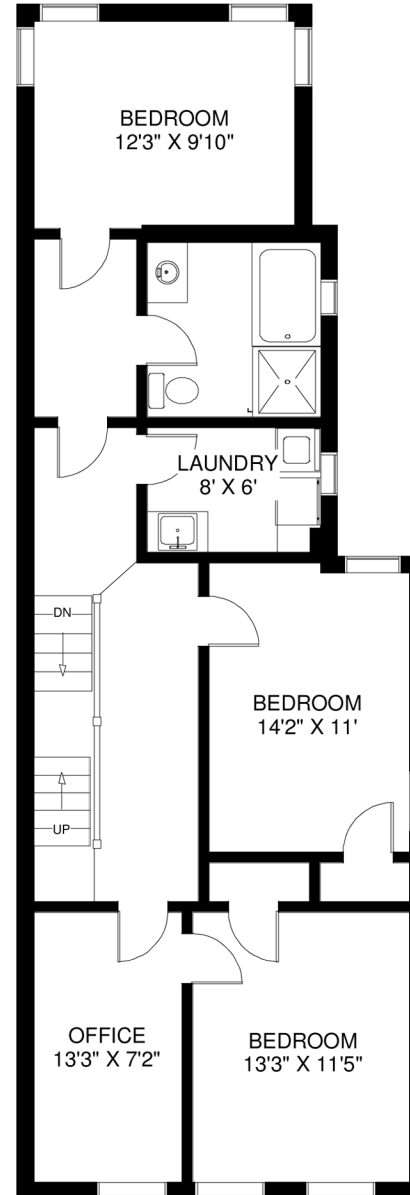


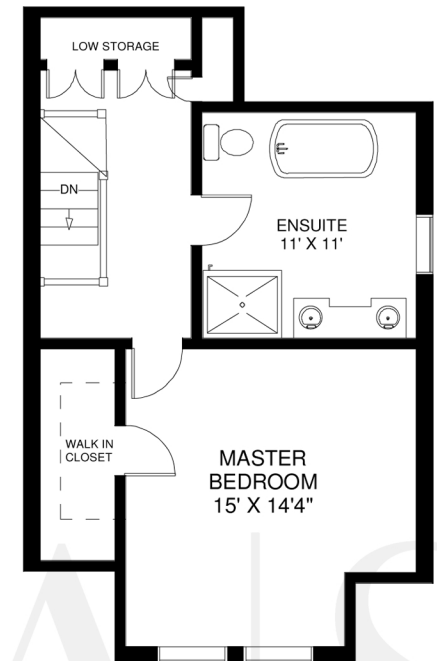
CEILING HT 10'
MAIN FLOOR
APPROXIMATELY 1,085 SQ FT



CEILING HT 7'
LOWER FLOOR
APPROXIMATELY 650 SQ FT



CEILING HT 8'8"
SECOND FLOOR
APPROXIMATELY 1,085 SQ FT



CEILING HT 7'10"
THIRD FLOOR
APPROXIMATELY 580 SQ FT