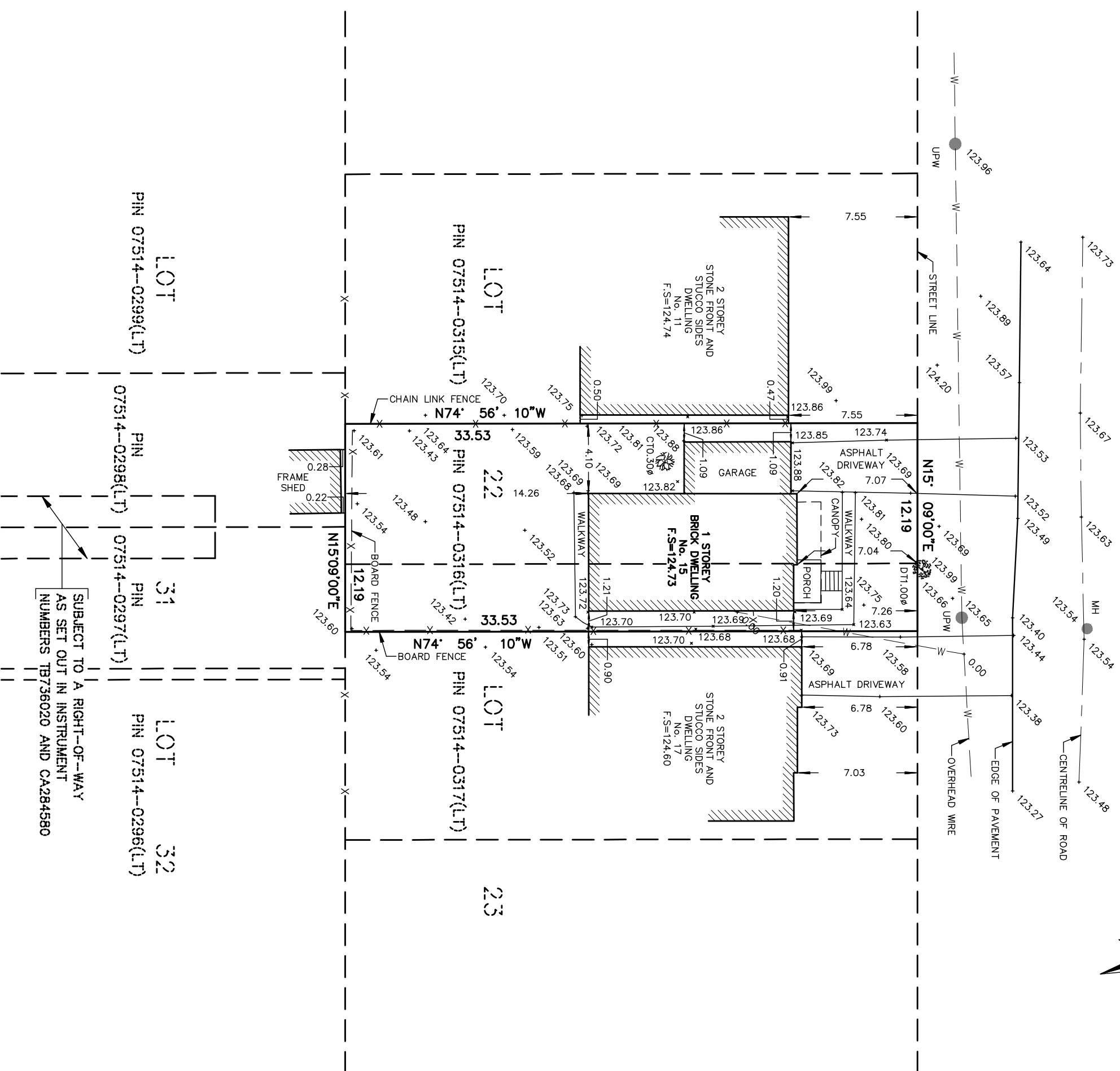
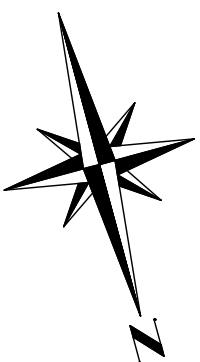


LOYALIST ROAD
(BY REGISTERED PLAN 3297)
PIN 07514-0424(LT)



SKETCH SHOWING ELEVATIONS OF
PART OF LOT 22 AND 23
REGISTERED PLAN 3297
(FORMERLY CITY OF ETOBICOKE)
CITY OF TORONTO

SCALE 1:250



THAM SURVEYING LIMITED, O.L.S. ©

METRIC

DISTANCES SHOWN ON THIS PLAN ARE IN METRES AND CAN BE
CONVERTED TO FEET BY DIVIDING BY 0.3048

LEGEND

- PIN** DENOTES PROPERTY IDENTIFIER NUMBER
- F.S.** DENOTES FINISHED SILL ELEVATION AT ENTRY
- CT0.50φ** DENOTES CONIFEROUS TREE AND DIAMETER
- DT0.50φ** DENOTES DECIDUOUS TREE AND DIAMETER
- MH** DENOTES MAINTENANCE HOLE
- UPW** DENOTES UTILITY POLE WOOD

BENCHMARK NOTE

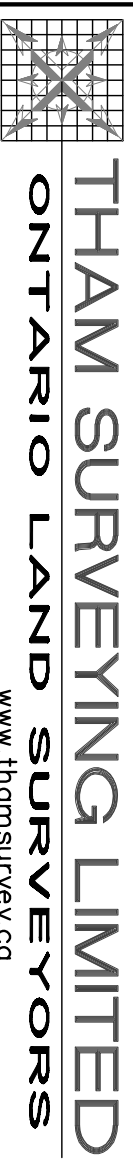
ELEVATIONS SHOWN HEREON ARE GEODETIC AND ARE REFERRED TO THE CITY OF TORONTO BENCHMARK NO. E485 (12519670485), HAVING AN ELEVATION OF 123.852 METRES, LOCATED AT NO. 58 MONTGOMERY ROAD (ETOBICOKE COLLEGIATE INSTITUTE) ON WEST SIDE OF MONTGOMERY ROAD. PLATE IN BRICK WALL ON EAST FACE OF BUILDING 0.81 METRES FROM SOUTHEAST CORNER OF BUILDING APPROXIMATE 15.24 METRES NORTH OF CENTRELINE OF ALLANBROOKE DRIVE, 0.90 METRES ABOVE GROUND LEVEL.

CERTIFICATE

THE FIELD OBSERVATIONS REPRESENTED ON THIS PLAN
WERE COMPLETED ON THE 2nd DAY OF JUNE, 2013

CAUTION

THIS IS NOT A PLAN OF SURVEY AND SHALL NOT BE
USED FOR MORTGAGE OR TRANSACTION PURPOSES.



THAM SURVEYING LIMITED
ONTARIO LAND SURVEYORS

www.thamsurvey.ca

8888 KEELE STREET, UNIT 7 PHONE: 905-761-6521 FAX: 905-761-6523
VAUGHAN, ONTARIO, L4K 2N2 1-855-761-6521

DRAWN BY: TH.S. CHECKED BY: TH.S. CAD NUMBER: 13-002TP JOB NUMBER: 13-002-AXYZ

SUBJECT TO A RIGHT-OF-WAY
AS SET OUT IN INSTRUMENT
NUMBERS TB736020 AND CA284580

LOT
PIN 07514-0299(LT)

PIN 07514-0298(LT)

31

PIN 07514-0297(LT)

LOT
PIN 07514-0296(LT)

32

LOT

PIN 07514-0315(LT)

22

PIN 07514-0316(LT)

LOT

PIN 07514-0317(LT)

23