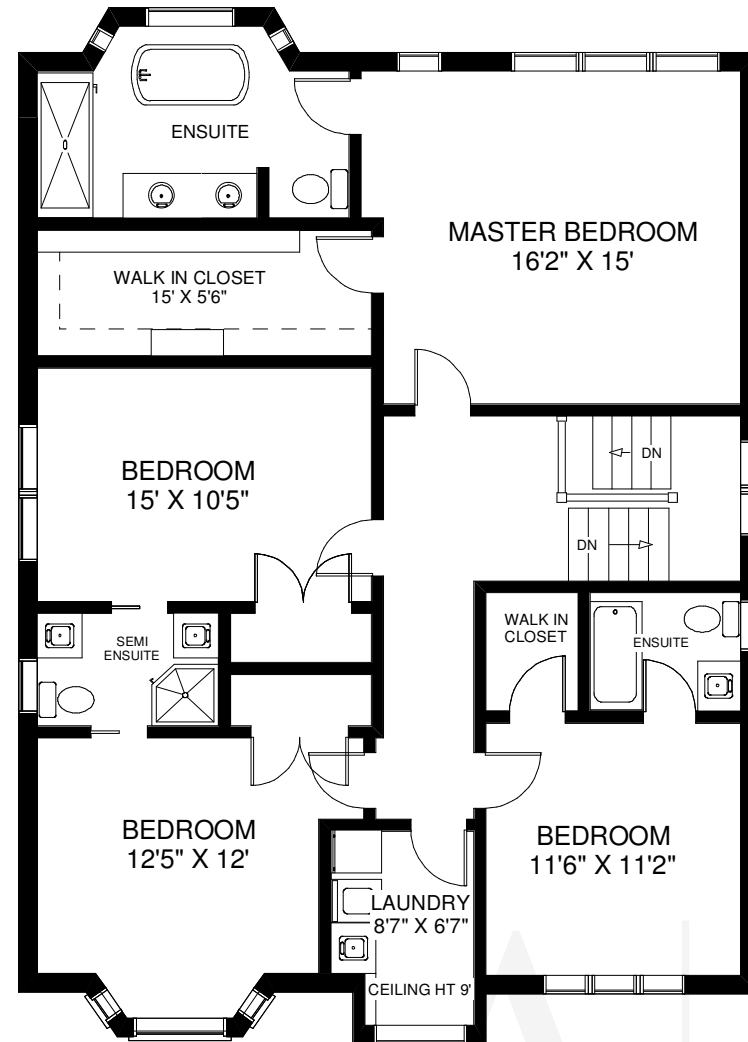


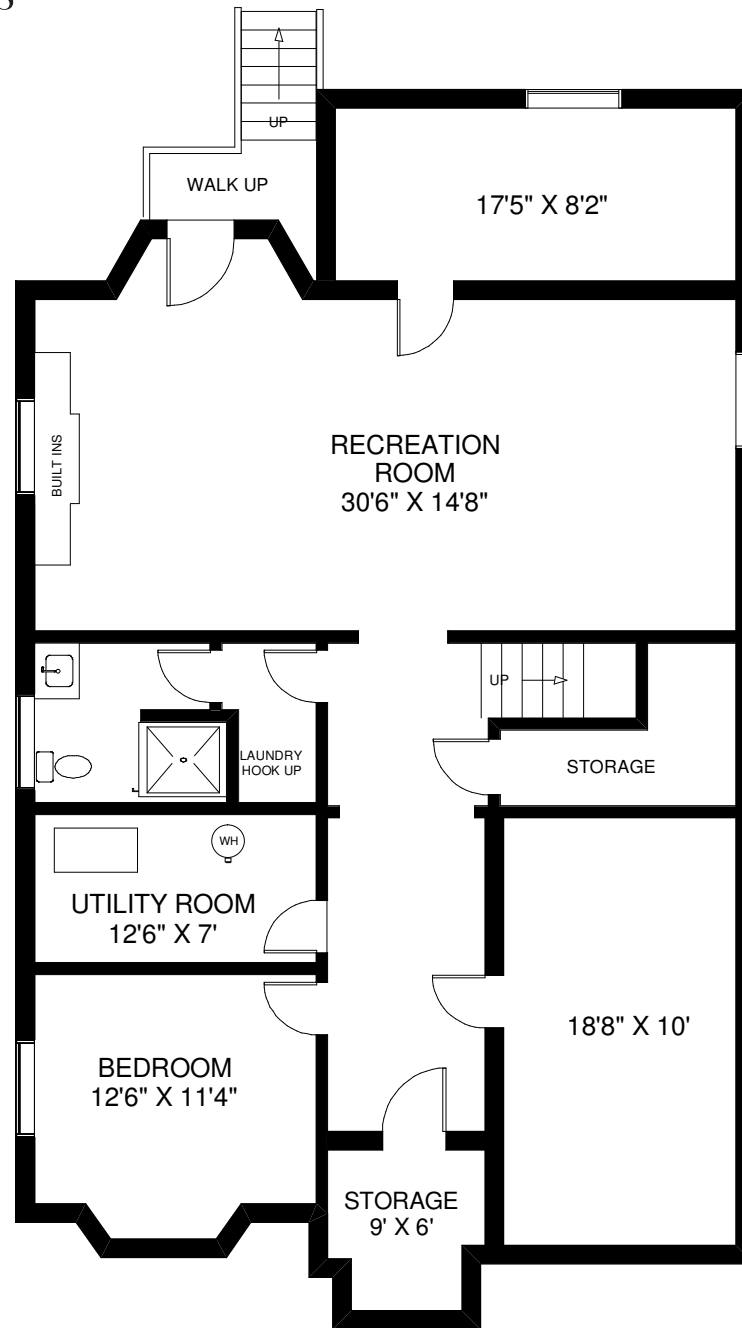
CEILING HT 9'

MAIN FLOOR
APPROXIMATELY 1,200 SQ FT



CEILING HT 10'2"

SECOND FLOOR
APPROXIMATELY 1,450 SQ FT



CEILING HT 8'

LOWER FLOOR
APPROXIMATELY 1,650 SQ FT

Note: Measurements & Calculations are approximate. Provided as a guideline only.

